

# PUBLIC HEALTH MUSEUM

## IN MASSACHUSETTS

### WELCOME STUDENTS!

It's back-to-school season and we've been pleased to host several high school and college student tours recently, including the 31 sophomores and juniors from Essex Tech's nursing program. Interested in bringing your class to the museum? Click the link below to explore our offerings. Our engaging campus tours are a popular option, and we welcome artists and photographers to view the stunning architecture.

[BOOK A TOUR](#)



*Essex Tech's nursing program students visited the museum and enjoyed both indoor and outdoor tours.*

The museum is seeking indoor and outdoor volunteer guides. Training is available. The museum is open Thursdays and Saturdays at this time. [info@publichealthmuseum.org](mailto:info@publichealthmuseum.org)

### Why I Volunteer

*....from Julie Kinchla and Emy Thomas, volunteers, collections & genealogy*

When I retired from my job as a research and reference librarian I looked for a place to volunteer where I could continue to use my skills. I work on cataloging and organizing museum collections and help out with our genealogy research service which is becoming very popular.

It's very satisfying to help a family find out more about their ancestors. Working on genealogy requests is fascinating and often very sad. In our various patient records, we see so many stories; pregnant teens sent to the hospital by their families, orphans who had no one to take them, and older adults admitted with chronic (now curable) illness. *-Julie*

Having retired from fulltime work as a microbiology supervisor, I began my volunteer work at the museum around 2010. I arrived with a donation of records from the Northeast Branch of the American Society for Microbiology (NEBASM).

It was during that time that I became interested in the history and preservation of various public health records and documents. Through my other volunteer work at The Dorchester Historical Society, I was already familiar with the software and could help the PHM.

As someone who has been doing personal genealogy for a long time, I enjoy doing genealogical research at the museum as well. We use the records we have, though some have gaps in time, to help people find information about their families. It is especially gratifying when we find something. *-Emy*





## YARD SALE SUCCESS

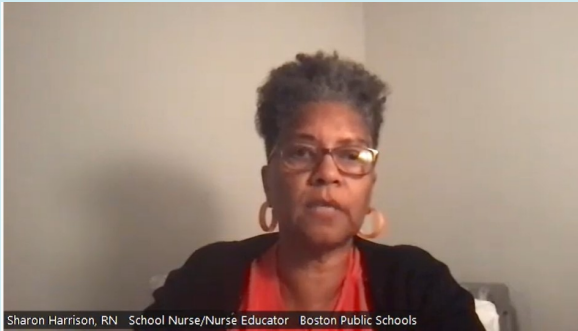
Treasure hunters, antique buffs, and public health collectors visited our basement yard sale at the end of September. We are grateful to our volunteers, high school helpers, and the many people who made donations and helped us create some much needed space for storage.

Stay tuned for our spring clean out event to be announced!



**Local TV station WBZ/CBS News Boston interviewed Museum President Dr. Al DeMaria.** The "It Happens Here" program, hosted by Levan Reid, was a fun and informative segment. Al reported that the whole crew was fascinated and stayed longer than expected, soaking in the history!

[WATCH HERE](#)



Sharon Harrison, RN, School Nurse/Nurse Educator in the Boston Public Schools, discussed the need for stakeholders to work to remove barriers and support school nurses during *School Nursing in Massachusetts: Yesterday, Today, and Tomorrow!*

[WATCH HERE](#)

## THE HISTORY OF SCHOOL NURSING

We were pleased to host an online discussion with the Massachusetts School Nurse Organization (MSNO) and the Massachusetts Department of Public Health (MDPH), exploring of the history of school nursing.

Author Dorothy Keeney shared insights from her book, *The Untold Story Of Annie McKay and the Boston Public Schools 1905-1986*.

A discussion with public school nursing professionals shared valuable insight into school nursing past, present and future. If you missed the program, you can watch it on our YouTube channel.

## GENEALOGY

The Public Health Museum maintains records that may be of interest to family members doing genealogical research for specific individuals who lived or worked at Tewksbury Hospital. Due to the nature and format of these records, interested parties must request a search, which will then be conducted by museum staff and volunteers.

### What We Have:

The Tewksbury Hospital collection consists of patient intake records dating from 1854 to 1957, patient discharge records dating from 1859 to 1955. We also maintain cemetery records for The Pines Cemetery and the No Name Cemetery off Livingston Street, Tewksbury, Massachusetts.

**\*Both patient intake and discharge records have various gaps in their time frame.**

If you are looking for Intake Records dating from 1854 to 1884, these records are available online thanks to the collaboration with the University of Massachusetts Lowell Libraries.

To view these records, click the link: [libguides.uml.edu/c.php?g=492497&p=3369244](http://libguides.uml.edu/c.php?g=492497&p=3369244)



### What We Do Not Have:

The Tewksbury Hospital collection does not include patient medical records, but general census information with limited information about disease or condition while at the institution. Patient medical records are held by the Tewksbury Hospital records department and anyone interested in those records would have to reach out to the records department directly. Those records are protected under federal privacy protection regulations.

### What the Records Contain:

The records contain personal information about the patient or staff member. Generally, but not always, the records give the individual's name, patient number, age, gender, birthplace, disease or condition, occupation, date of admission, address, discharge date, address of nearest relative or friend.

[LEARN MORE](#)

---

## **The Public Health Museum Annual Meeting November 16, 2022, 6:30 – 8:00 PM, Virtual on Zoom All are welcome!**

Join the Public Health Museum for our virtual annual meeting on Wednesday, November 16, 2022. You will hear about the museum's accomplishments over the year, recent accessions and discoveries, and future programs and plans. We will celebrate the 10<sup>th</sup> anniversary of Outbreak!, our summer program to educate high school students about public health. You will hear about the history of the program and hear from past student participants who will discuss their participation and how that participation affected their educational pursuits and career choices. There will also be a presentation on the state's successful Vaccine Equity Initiative, launched to address inequities in access to COVID-19 vaccine. The informational program will be followed by the business meeting (members only).

[REGISTER HERE](#)

---

Tours in November and December are free with a food pantry donation.

*"America's first public health museum"*

[Public Health Museum](#)



Public Health Museum | 365 East St., Tewksbury, MA 01876

[Unsubscribe info@publichealthmuseum.org](mailto:info@publichealthmuseum.org)

[Update Profile](#) | [Constant Contact Data Notice](#)

Sent by [info@publichealthmuseum.org](mailto:info@publichealthmuseum.org) powered by



Try email marketing for free today!