

Directions to the Old Chapel, Tewksbury Hospital

From Route 128 (95N)

- Take Route 93 North to exit 42, Dascomb Road.
- Turn left at the end of the ramp and drive approximately 3 miles. See little league ball field on the right.
- Take left at Entrance # 1 (across from ball field).
- The Old Chapel is the first large building on right. Park in S-Lot on the left.
- Follow signs to the Old Chapel entrance.

From Route 495

- Take Exit 38, Route 38.
- Turn left at end of ramp and drive approximately 3 1/2 miles.
- At set of lights at the Shell gas station take a left onto Chandler Street.
- Follow Chandler Street to intersection. Bear right at the intersection and take third right onto Hospital grounds (approximately 50 yards).
- The Old Chapel is the first large building on right. Park in S-Lot on the left.
- Follow signs to the Old Chapel entrance.

From Lowell

- Follow Route 38 directions above.

Registration fee includes continental breakfast, break, lunch, CME/CEU credits and day-of-conference Museum admission

\$40.00	Conference registration
\$25.00	Students/Seniors (65+)
Value Pack	Add \$10.00 and receive a one-year Public Health Museum membership—a savings of \$15.00 and your chance to support the first public health museum in the country

Registration form with mailing address is attached.

For more information contact:

Christine Pondelli PHMuseum@comcast.net
Marilyn DelValle marilyn.delvalle@state.ma.us



Health Equity and the Future of Public Health

Wednesday

May 6, 2009

8:30 am—3:30 pm

Registration 7:45 am

The Old Chapel
Tewksbury Hospital
365 East Street
Tewksbury, MA 01876

A conference for physicians, nurses, health professionals, social workers, legislators and community leaders interested in reducing health disparities in Massachusetts and the US

Sponsored by the
Public Health Museum in Massachusetts
and Tewksbury Hospital

Public Health Museum
in Massachusetts



TEWKSBURY HOSPITAL

Content

Lectures and a facilitated panel discussion of health disparities, their history, current status, interventions and other measures to address disparities. The facilitated panel will be made up of policy makers and experts in the field. Conference speakers represent expertise in the history of health disparities, public health, nursing, health care policy and epidemiology.

Basis

Health disparities among racial, ethnic and economic minorities is a critical public health issue, and addressing them is a priority of the current state and federal administrations. In response to previous educational programs of the Department of Public Health in the areas of obesity, asthma and communicable disease which demonstrated significant health status inequity, participants asked for more information about the history, causes and solutions for health disparities.

Conference Objectives

- Participants will be able to describe the history of health disparities in the United States, especially as it pertains to African-Americans and other minority groups.
- Participants will be able to list examples of disparities in health status, healthcare access and outcomes.
- Participants will be able to explain current efforts to address health disparities and how these can be incorporated in their practice.
- Participants will be able to describe other proposals to address health disparities and how these will impact their practice.

CME: Tewksbury Hospital designates this education activity for a maximum of 6 *AMA PRA Category 1 Credits™*. Physicians should only claim credit commensurate with the extent of their participation in the activity. Tewksbury Hospital is accredited by the Massachusetts Medical Society to provide Continuing Medical Education for physicians.

CEU: This program is offered by the Massachusetts Department of Public Health, Bureau of Infectious Disease Prevention, Response and Services. A maximum of 6 contact hours for this program will be provided in accordance with the Board of Registration of Social Workers (258CMR 31.00et seq), Board of Registration in Nursing Regulations governing continuing education (244 CMR 5.00).

Faculty

John Auerbach, M.B.A., Commissioner of Public Health
Massachusetts Department of Public Health

Jarrett T. Barrios, J.D., President, Blue Cross/Blue Shield Foundation of Massachusetts

Valerie Bassett, M.F.A., Executive Director, Massachusetts Public Health Association

JudyAnn Bigby, M.D., Secretary, Executive Office of Health and Human Services, Commonwealth of Massachusetts

W. Michael Byrd, M.D., M.P.H., Director, Institute for Optimizing Health and Health Care; Health Policy Researcher, Harvard School of Public Health

Linda A. Clayton, M.D., M.P.H., Associate Medical Director, MassHealth; Health Policy Researcher, Harvard School of Public Health

Senator Susan C. Fargo, M.A.T., M.P.A., Massachusetts Senate (invited)

Alisa K. Lincoln, M.P.H., Ph.D., Associate Professor of Health Sciences and Sociology, Northeastern University

Georgia Simpson May, M.M., Director, Office of Health Equity, Massachusetts Department of Public Health

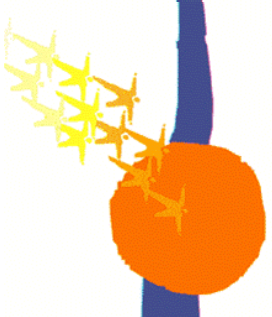
George B. Mosley III, M.B.A., J.D., Lecturer in Health Law and Management, Harvard School of Public Health

Nancy Norman, M.D., M.P.H., Chief Medical Officer, Boston Public Health Commission

Representative Jeffrey Sánchez, Massachusetts House of Representatives

Jean E. Swinney, Ph.D., R.N., Dean, School of Nursing, University of Massachusetts, Amherst

Health Equity and the Future of Public Health

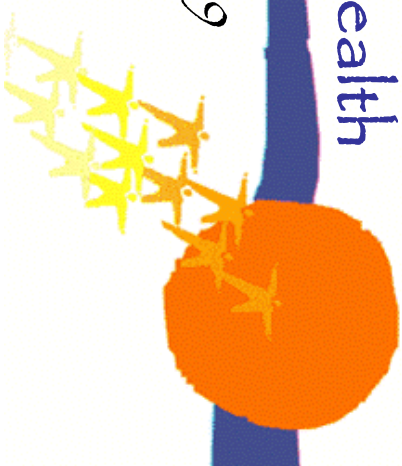


Wednesday, May 6, 2009

Agenda

- 7:45 Registration and Breakfast
- 8:30 Welcome
Sandra Akers, Chief Executive Officer, Tewksbury Hospital
Katharine Domoto, M.D., M.B.A., President, The Public Health Museum
Lauren Smith, M.D., M.P.H., Medical Director, Massachusetts Department of Public Health
- 8:45 Health Disparities as a Fundamental Public Health Issue
John Auerbach, Commissioner of Public Health
- 9:15 Disparities and Inequities in Health and Health Care: Origins, Evolution, Perpetuation, Con-
figurations, Mechanisms and Solutions
W. Michael Byrd, M.D., M.P.H., Director, Institute for Optimizing Health and Health
Care; Health Policy Researcher, Harvard School of Public Health
- Linda Clayton**, M.D., M.P.H., Associate Medical Director, MassHealth; Health Policy
Researcher, Harvard School of Public Health
- 10:15 Break
- 10:30 Equitable Health Care: a Global Issue
George B. Mosley III, M.B.A., J.D., Lecturer in Health Law and Management, Harvard
School of Public Health
- 11:00 Health Equity: The Boston Experience
Nancy Norman, M.D., M.P.H., Chief Medical Officer, Boston Public Health Commission
- 11:30 Health Equity as an Imperative for the Health Professions
Jean E. Swinney, Ph.D., R.N., Dean, School of Nursing, University of Massachusetts,
Amherst
- 12:00 Lunch and Museum Open House
- 1:30 Facilitated Panel Discussion, with morning speakers and audience participation
Jarrett T. Barrios, J.D., President, Blue Cross/Blue Shield Foundation of Massachusetts
Valerie Bassett, Executive Director, Massachusetts Public Health Association
JudyAnn Bigby, M.D., Secretary, Massachusetts Executive Office of Health and
Human Services
Senator **Susan C. Fargo**, Massachusetts Senate (invited)
Alisa K. Lincoln, M.P.H., Ph.D., Associate Professor of Health Sciences and Sociology,
Northeastern University
Representative **Jeffrey Sánchez**, Massachusetts House of Representatives
Georgia Simpson May, Director, Office of Health Equity, Massachusetts Department of
Public Health (MODERATOR)
- 3:30 Adjournment – The Public Health Museum available for participants

Health Equity and the Future of Public Health



Wednesday May 6, 2009

8:30am—3:30 pm

Registration 7:45 am

Registration Form—Please print clearly

Last name _____ First _____

Title _____

Organization _____

Address _____

Phone _____ Fax _____

Email _____

\$40.00 Conference registration

\$25.00 Students/Seniors (65+)

Value Pack Add \$10.00 to your registration fee and receive a one-year Public Health Museum membership—a savings of \$15.00 and your chance to support the first public health museum in the country

Please make check payable to the **Public Health Museum** and mail by **April 30, 2009** to:

Ms. Christine Pondelli
Public Health Museum
Tewksbury Hospital
365 East Street
Tewksbury, MA 01876

Sponsored by:
The Public Health Museum in Massachusetts
and Tewksbury Hospital



Public Health Museum
in Massachusetts

